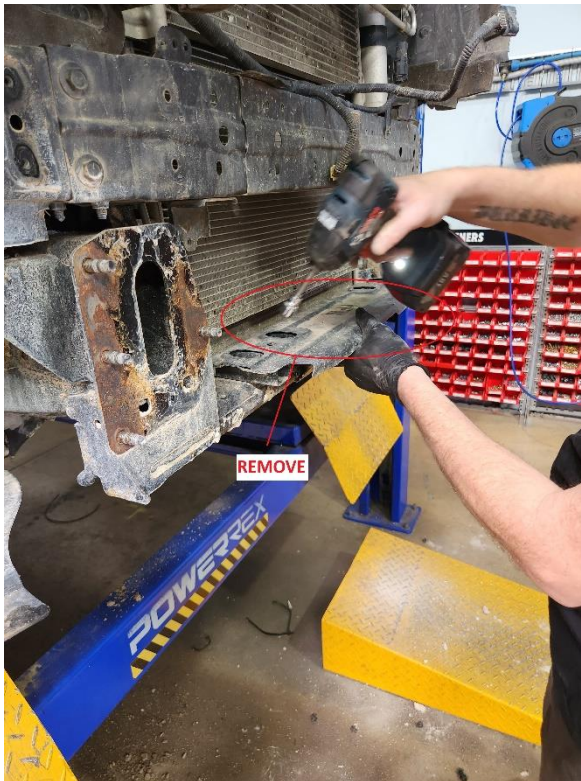
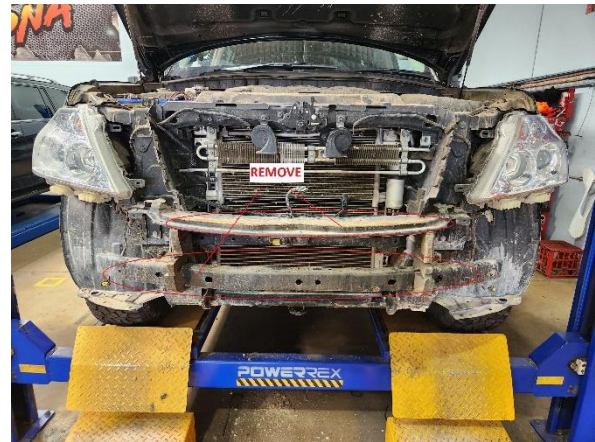


# S1-4 Y62 PREDATOR FRONT BAR



## INSTALLATION INSTRUCTIONS

1. Open packaging and remove all components. Carefully unwrap all parts. Do not use sharp knife etc. Lay all parts out on a soft surface and identify all parts.
2. Remove the front bumper and grill from your Y62, remove bumper supports and front impact rail. Remove air dam trims and grill support panel. Using a wire brush clean up surfaces and apply rust preventing paint.

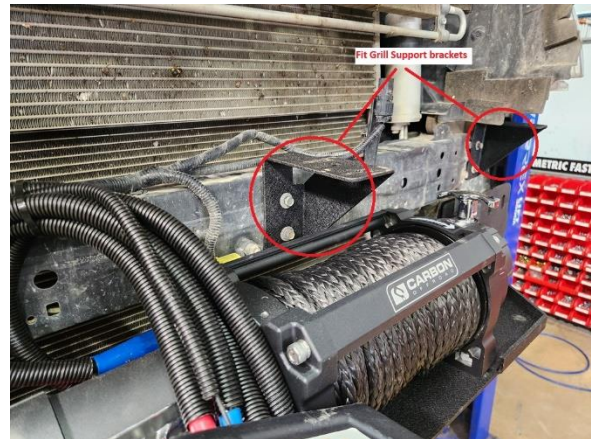
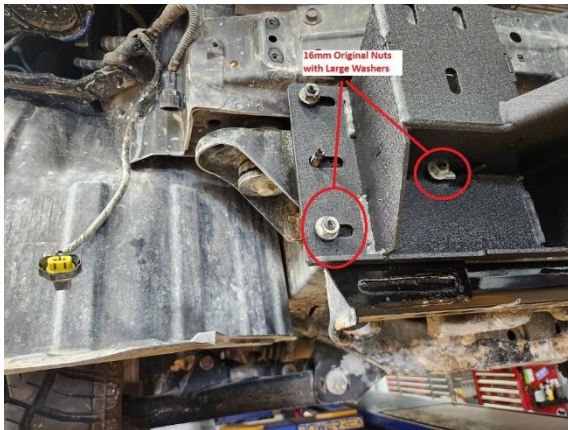


# S1-4 Y62 PREDATOR FRONT BAR



## INSTALLATION INSTRUCTIONS

3. Fit and bolt on the winch cradle using the original 16mm nuts and large flat washers on the 2 lower holes on both sides only. Centre the winch cradle and tighten. Fit 3 x grill support brackets using 6 original M6 bolts as shown in picture but don't tighten bolts yet.



4. Place grill support on top of grill support brackets and fit 6 x M6 bolts washers and flange nuts but don't tighten. Tighten support bracket to Radiator support first then tighten grill support panel bolts. Attach Grill clip housing on top of grill panel and fit 4 x M6 bolts washers and nuts.



# S1-4 Y62 PREDATOR FRONT BAR



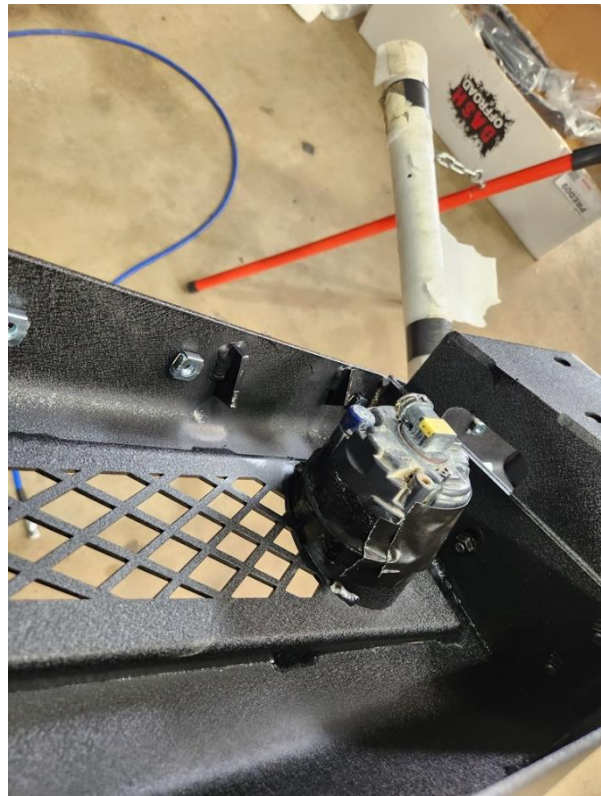
## INSTALLATION INSTRUCTIONS

5. Bolt lower headlight mount onto grill support bracket using M8 x 35mm bolt washer and flange nut with plastic spacer between headlight and grill support.



6. Assemble fascia and wings. Lay Fascia on soft surface upside down to access the wing attachment holes. Place the mounting bracket into the ends of the fascia and align the studs. Fit the wings using 8 x M10 flange nuts but leave loose. Align front of wing to front

facia and tighten nuts. Remove fog lights from original front bar. Using a belt sander or similar remove some of the plastic material to allow fitment inside fog light tubes in front bar. Once fog lights fitted use some Sikaflex or similar to apply a bead around the rear of the fog light tube. Allow to cure or apply some tape to hold fog light until cured. **Note** May need to remove fog light brackets to allow fitting of factory fog lights.



# S1-4 Y62 PREDATOR FRONT BAR



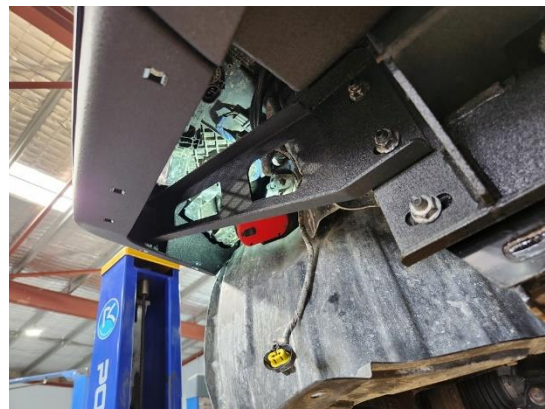
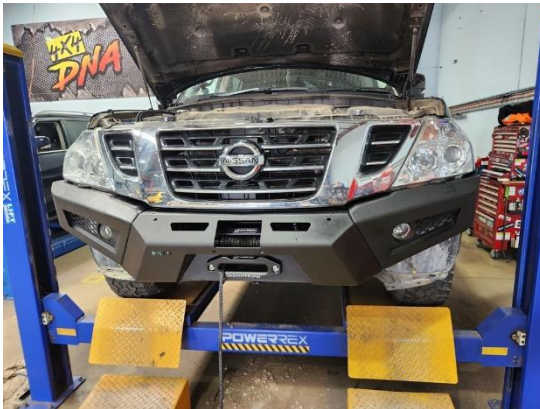
## INSTALLATION INSTRUCTIONS

---

7. Fit 17 x M8 cage nuts along bottom of fascia and wings.



8. Refit grill to brackets and confirm fitment. Remember to reconnect the front camera. Using 2 people to hold bar in place attach bar to winch cradle using 6 x M10 bolts, washes and flange nuts. Adjust bar to have even clearance under grill and wings. While holding in place tighten mounting bolts. Recheck alignment and adjust if required. Fit Wing support brackets and refit remaining 16mm bolts to attach the winch cradle and tighten. Fit outer bolts to wing supports but leave loose. Flex wings slightly to align and while holding wings tighten outer bolts.



9. Drill 2 or 4 holes (depending on model) for park sensors. The holes need to be 26mm diameter and placed as shown in picture. Refit Park sensor loom removed from factory bar. **Note** May need to extend sensor looms by cutting and soldering extensions into the 2 wire sensor looms. Fit park sensor bezels removed from factory bar and fit park sensors. Connect all sensors and cable tie loom to secure.

# S1-4 Y62 PREDATOR FRONT BAR



## INSTALLATION INSTRUCTIONS

---



10. Attach centre bash plate to under side of bar using M8 x 20mm button head bolts and washer. Refit original bash plate over front bash plate using original bolts. Fit wing covers with remaining M8 x 20mm button head bolts. **Note** May have to spread Cage nuts slightly using flat blade screwdriver.



# S1-4 Y62 PREDATOR FRONT BAR



## INSTALLATION INSTRUCTIONS

---

11. Mark and trim plastic inner guard as required. Assemble and fit number plate swing up mount if you have fitted a winch.

