

DASH
OFFROAD

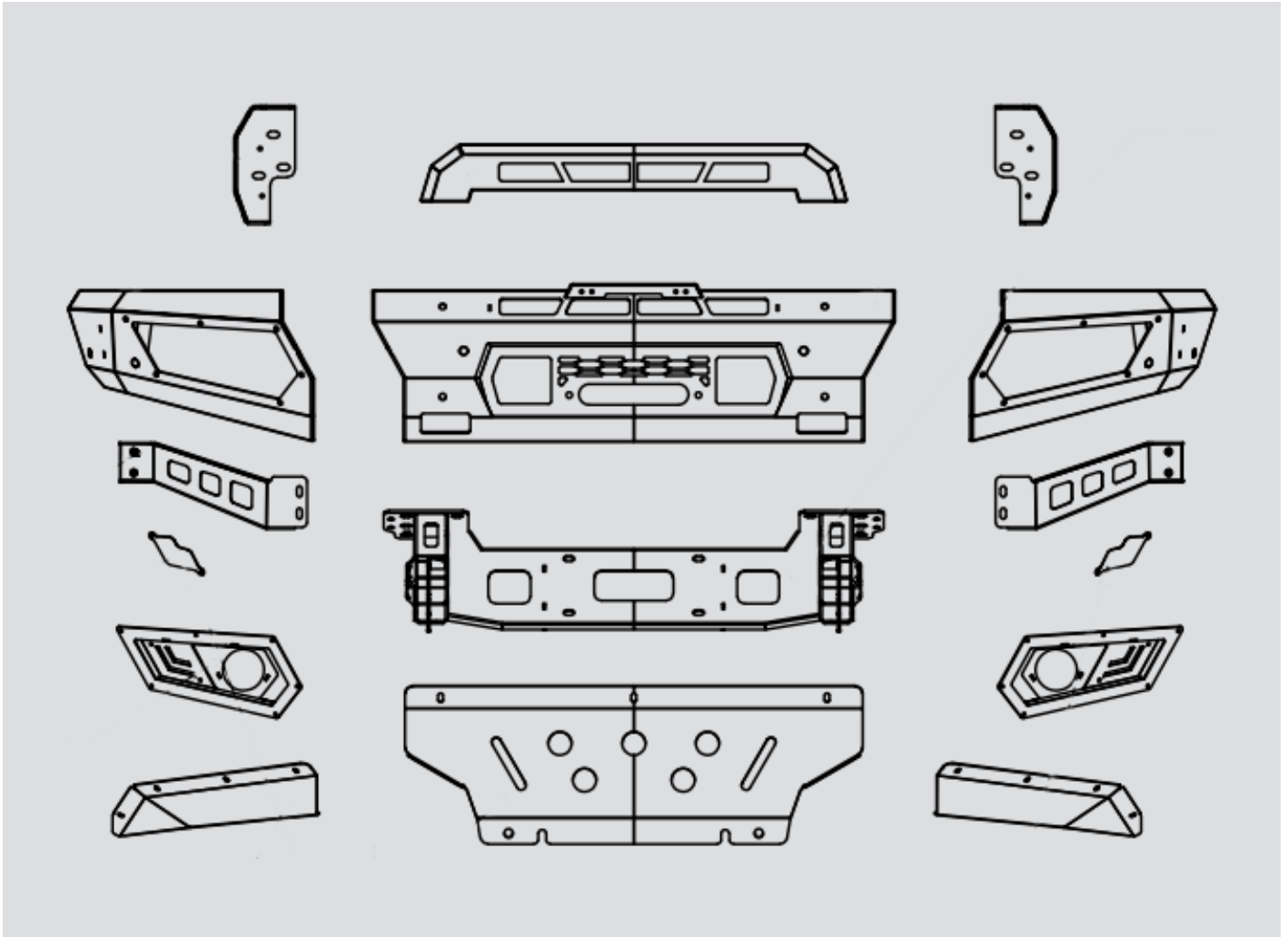
TANK 300
BULLBAR



INSTALLATION
INSTRUCTIONS

TANK 300 BULLBAR

INSTALLATION INSTRUCTIONS



TANK 300 BULLBAR

INSTALLATION INSTRUCTIONS



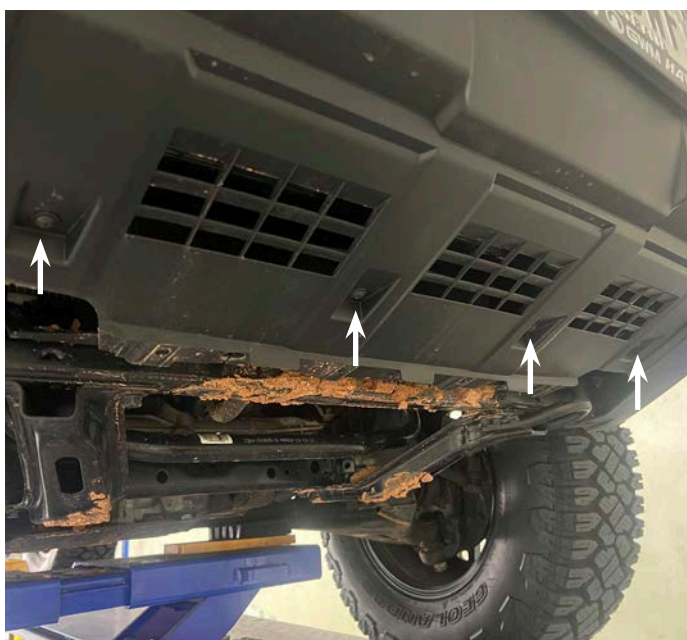
1. Remove the 3 bolts from the bottom of the factory bumper



2. Remove the bolt and screw from the bottom outer sides of the bar



3. Remove the 4 lower screws



4. Remove the 3 lower clips on the inner guard



TANK 300 BULLBAR

INSTALLATION INSTRUCTIONS



5. Pull back the inner guard to access the 2 bolts connected to the wing brackets



6. Carefully remove the 2 plastic covers on the front of the bar and remove the 2 bolts behind the cover

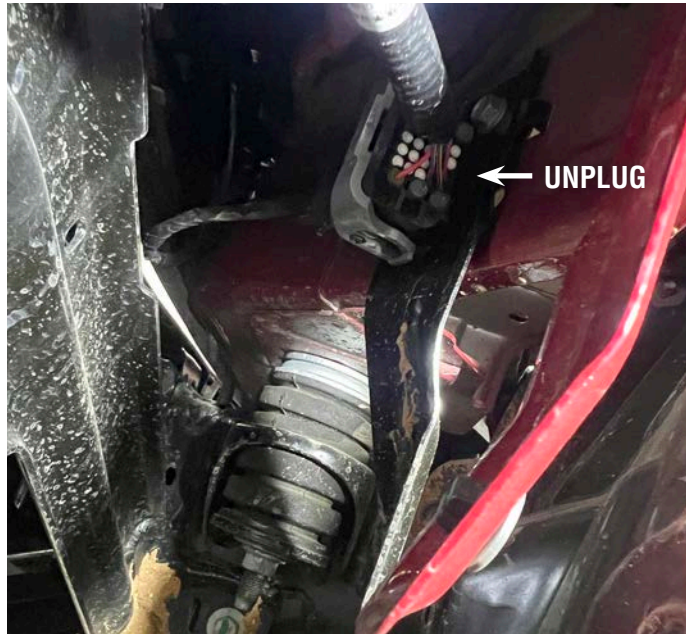


TANK 300 BULLBAR

INSTALLATION INSTRUCTIONS



7. Unplug the bumper wiring loom, connection is in front of the passenger inner guard



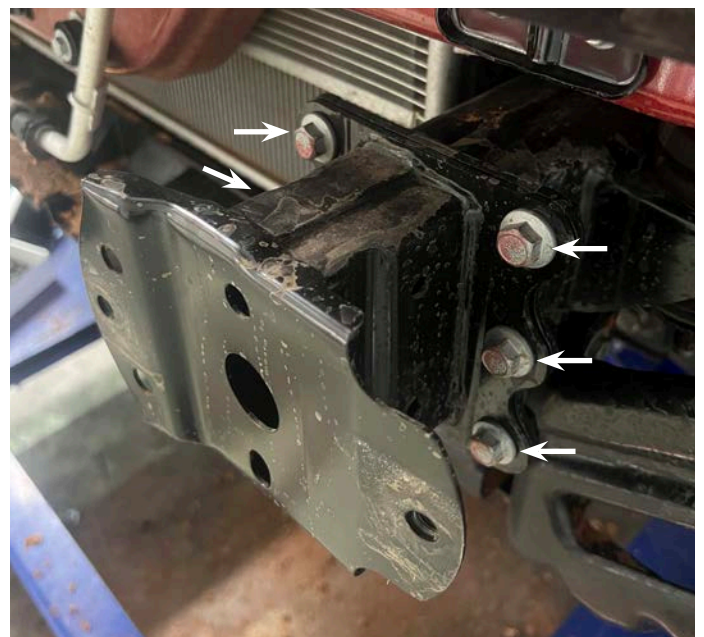
8. To remove the bar place your hands between the bar and the grille and pull and lift the bar firmly to unclip it from the centre clip



9. Remove the 4 bolts in the bumper support bracket and remove bracket



9. Remove the 5 bolts in chassis brackets and remove brackets



TANK 300 BULLBAR

INSTALLATION INSTRUCTIONS



10. Unbolt and remove the two wing support brackets



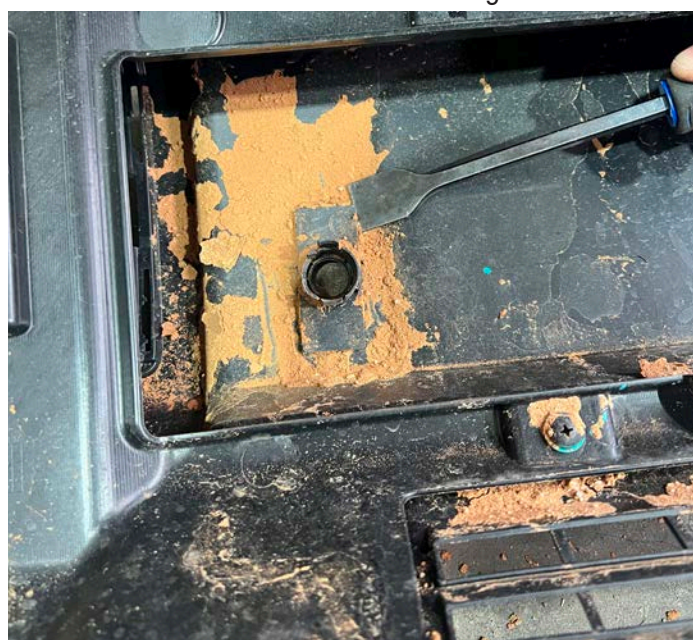
11. Unplug and remove the wiring loom from the factory bar and retail loom



12. Remove the parking sensors from factory bar and retain. Make a note of position and orientation of sensors and match when refitting to bullbar



13. Carefully remove the parking sensor mounts with a scraper or similar, these are held in with double sided tape. Make a note of position and orientation of sensors and match when refitting to bullbar



TANK 300 BULLBAR

INSTALLATION INSTRUCTIONS



14. Fit the winch cradle with 10 x M10 x 25mm Bolts with 25mm outer diameter washers



15. Fit the bullbar base brackets with 3x M12 x 35mm Bolts with nylon nuts and washers to the winch cradle. Place the bracket square and aligned to the back of the winch cradle, as marked below. These brackets can be adjusting once the bar is fitted if needed.

16. Bolt wing support brackets with 2x M10 x 25mm bolts with washers and nuts - leave these finger tight



TANK 300 BULLBAR

INSTALLATION INSTRUCTIONS



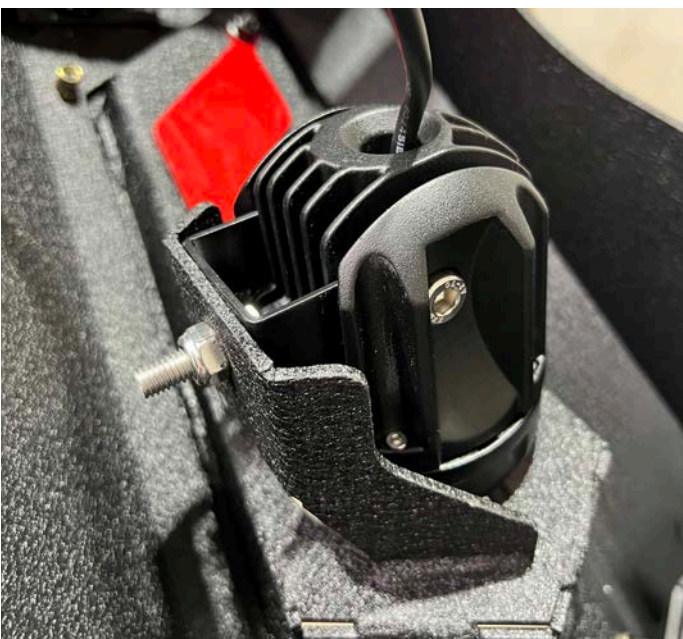
16. Bolt the bullbar wings to the centre with M10 x 25mm bolts and flange nuts



17. Fit the fog light insets with M6 button head bolts and nuts



18. Bolt the fog light in with the bolts supplied with the lights



19. Fit the sensor mounts that were removed from the factory bar with sikaflex or similar - make sure they are put back in the same order and orientation



TANK 300 BULLBAR

INSTALLATION INSTRUCTIONS



20. With the factory loom you will need to extend the two centre sensor wires by approx 200mm. You will also need to cut the factory fog light plugs of the loom and fit new plugs to the loom and fog lights. Wire and plugs are not supplied



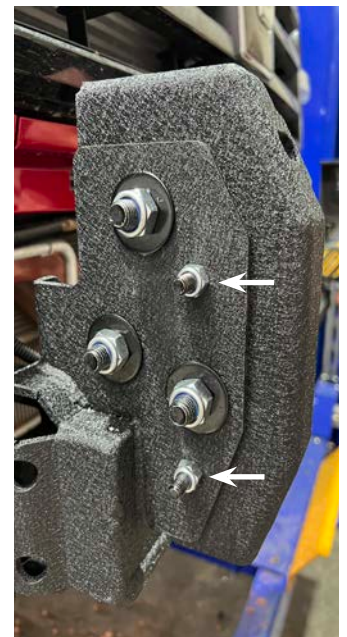
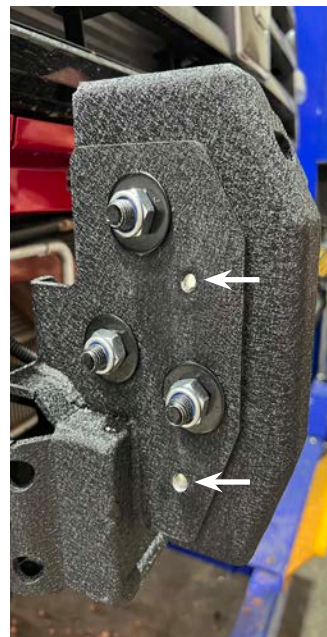
21. Refit the loom and cable tie it along the bottom of the plastic trim below the grille



22. Test fit the bullbar and adjust the base brackets as required to get an neat fit



23. Once base brackets locations are set drill out the locking pin holes and fit 2x M8 x 20mm Bolts with nylon nuts and washers



TANK 300 BULLBAR

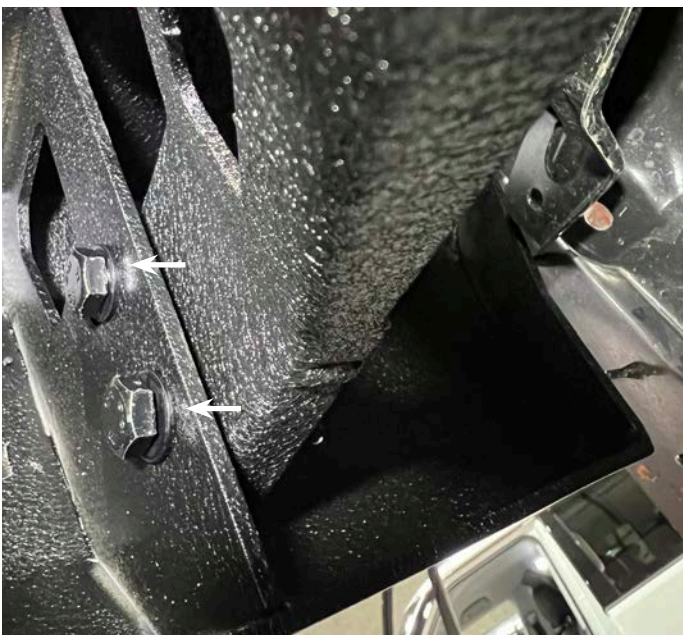
INSTALLATION INSTRUCTIONS



24. Fit the bullbar to the base brackets with 6x M12 x 30mm Button head bolts with washers and nuts. Fit the lightbar hoop at the same time as this uses the same top bolt. If you are fitting a lightbar (not supplied), mount this to the hoop before fitting to the bar.



25. Bolt the ends of the bullbar to the wing support brackets with 2x M10 x 25mm bolts and washers. Leave these finger tight. Align the ends of the bullbar with the guard and wheel flare and then tighten all the wing support bolts

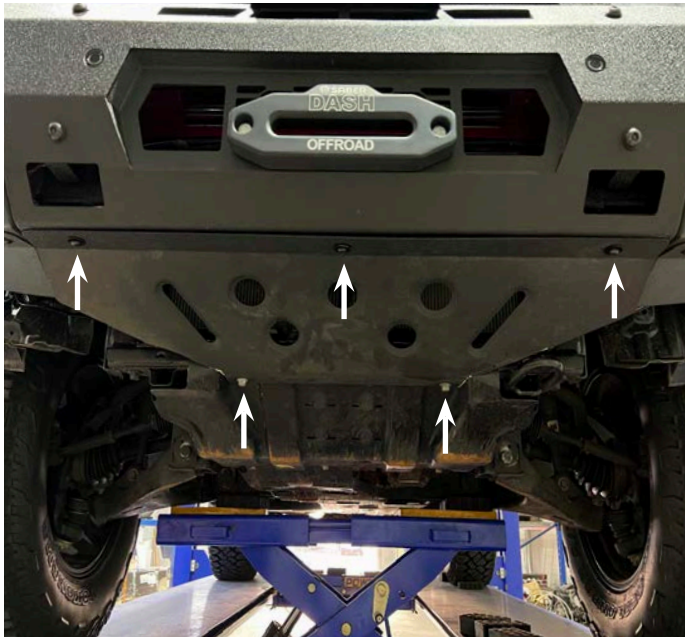


TANK 300 BULLBAR

INSTALLATION INSTRUCTIONS



26. Fit the bash plate with 3 x M8 x 20mm Button head bolts with washers to the front of the bash plate and reuse the factory bolts for the back of the bash plate



27. Fit the wing lower panels with M6 Bottom head bolts



28. Trim inner guards, tuck in behind bullbar and replace plastic clips

