

# **DASH ROCK SLIDERS**

## **INSTALLATION INSTRUCTIONS**



*DASH Samurai rock sliders are robust protective accessories designed for Y62 Patrols. They protect the vehicle's body and frame from damage caused by rocks, logs, and other obstacles during rugged off-road driving. Constructed from high-strength steel, these sliders provide enhanced ground clearance allowing for easier access in and out of the vehicle. Easy to install these rock sliders are essential for anyone looking to protect their vehicle while off-roading.*

### **Contents**

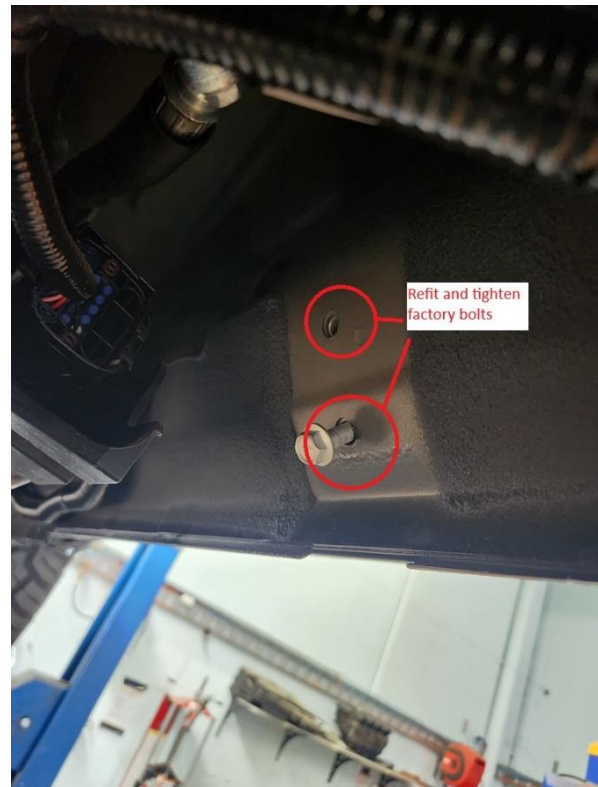
- 4x M8X140mm Bolts and nuts
- 4x M10x40mm Bolts and nuts
- 2x M12 Round head bolts
- 2x M12 Studs
- 4x Mould Nuts
- Left and Right DASH SAMURAI Y62 Rock Sliders

# DASH ROCK SLIDERS

## INSTALLATION INSTRUCTIONS



1. Unpack and inspect all parts and hardware. Remove factory side steps if fitted, refit M8 bolts in side step holes, and tighten to seal holes.



# DASH ROCK SLIDERS

## INSTALLATION INSTRUCTIONS



2. On the driver's side, unclip this loom clip. Remove the loom connector cover and unclip the loom connector from the bracket. Remove the 10mm bolt and remove the bracket.



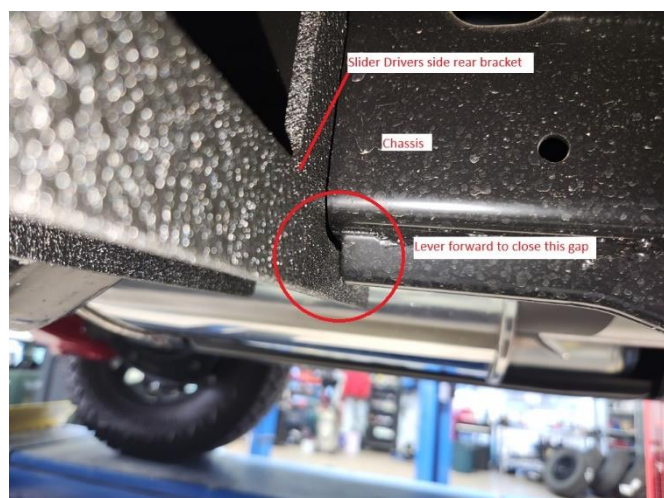
# DASH ROCK SLIDERS INSTALLATION INSTRUCTIONS



3. Push up slightly on this HBMC Hose bracket to allow room to clear the slider.  
Place the slider in place and use a jack to support the slider in place.



4. Fit the 2 M8 x 140mm bolt to the center chassis bracket and loosely fit the nuts and washers. Lever the slider as far forward as it will go.

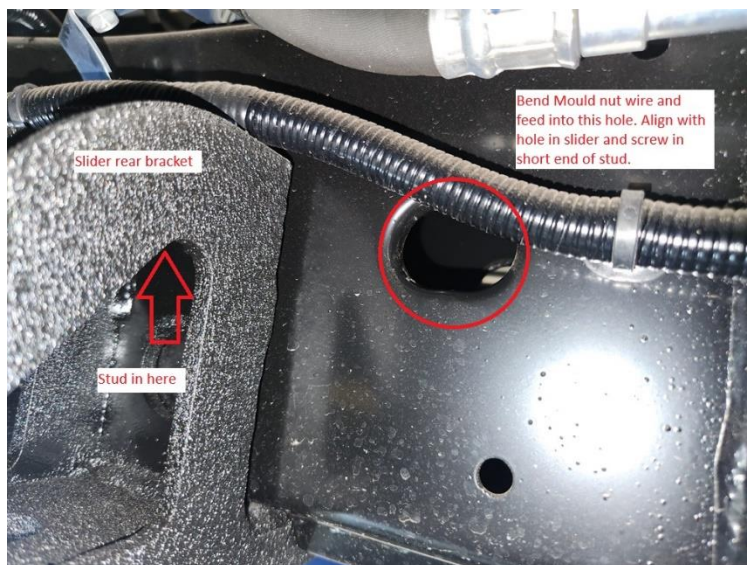


# DASH ROCK SLIDERS

## INSTALLATION INSTRUCTIONS



5. Bolt up the rear bracket using the M12 stud and mould clamp. You will need to insert the mould clamp into the hole in the chassis marked below and feed it along to where the rear bracket sits. Insert the M12 stud short thread first and screw in, fit the nut. Leave finger tight for now.



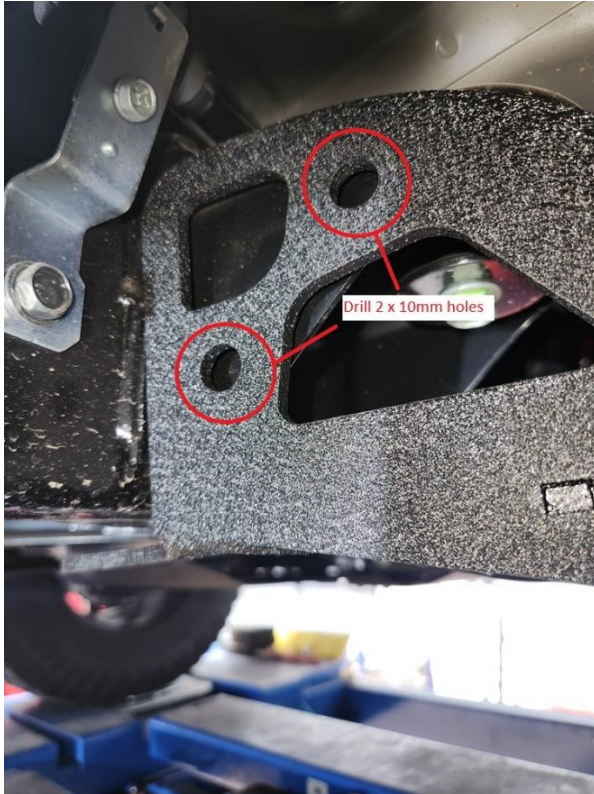
6. Feed the mould nut into the hole in the chassis near the front mount and align it with the hole in the bottom of the chassis and front bracket. Fit M12 dome head bolt with flat and spring washer, Tighten bolt.



# DASH ROCK SLIDERS INSTALLATION INSTRUCTIONS



7. Tighten all bolts fitted to the slider as required. Using a 90-degree drill or similar drill 2 x 10mm holes in front bracket as shown. Paint inside holes and fit 2 M10x40mm bolts and nuts. Tighten both bolts as required. Tie up to secure the loom as required.



# DASH ROCK SLIDERS

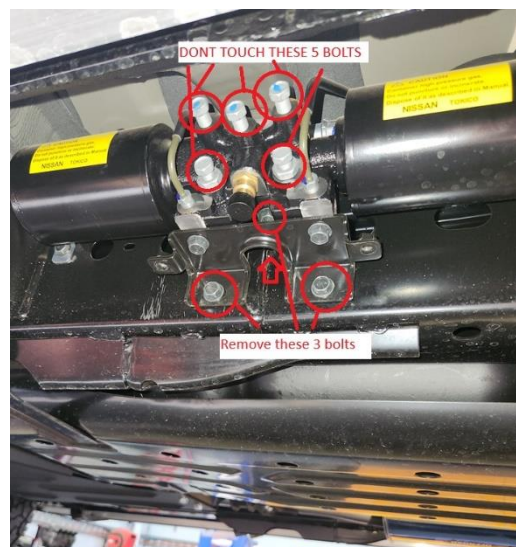
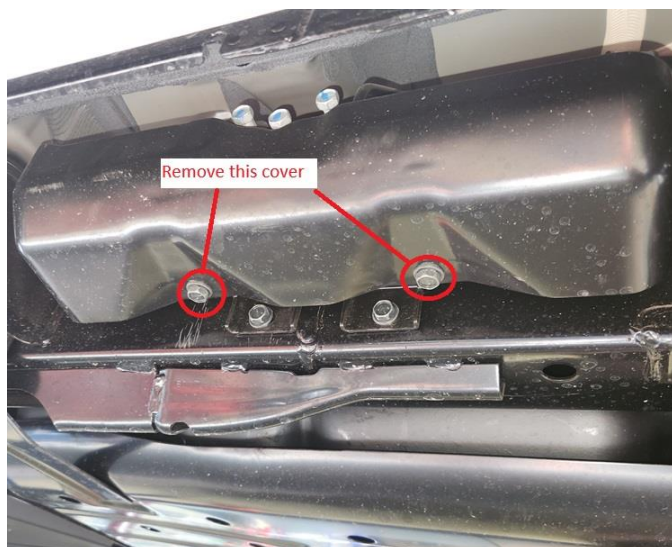
## INSTALLATION INSTRUCTIONS



### Passenger side

8. Remove the sidestep and refit the factory bolts. Unbolt and remove the rear HBMC cover. Remove the three bolts attaching the HBMC unit to the chassis.

**Note: Do Not Undo The Pressure Release Bolts On The HBMC Unit.**



9. Fit the passenger side slider up into position and support it with a jack or similar. Fit mould nut to rear mount behind HBMC Unit and screw in M12 stud **LONG THREAD FIRST** leaving short thread to attach nut (this allows clearance behind the HBMC unit). Unbolt and slide forward the heat shield above the exhaust to access the center bracket bolt holes. Fit the 2 M8x140mm bolts and nuts with washers to the center bracket as required. Lever the slider as far forward as it will go. Tighten bolts fitted.

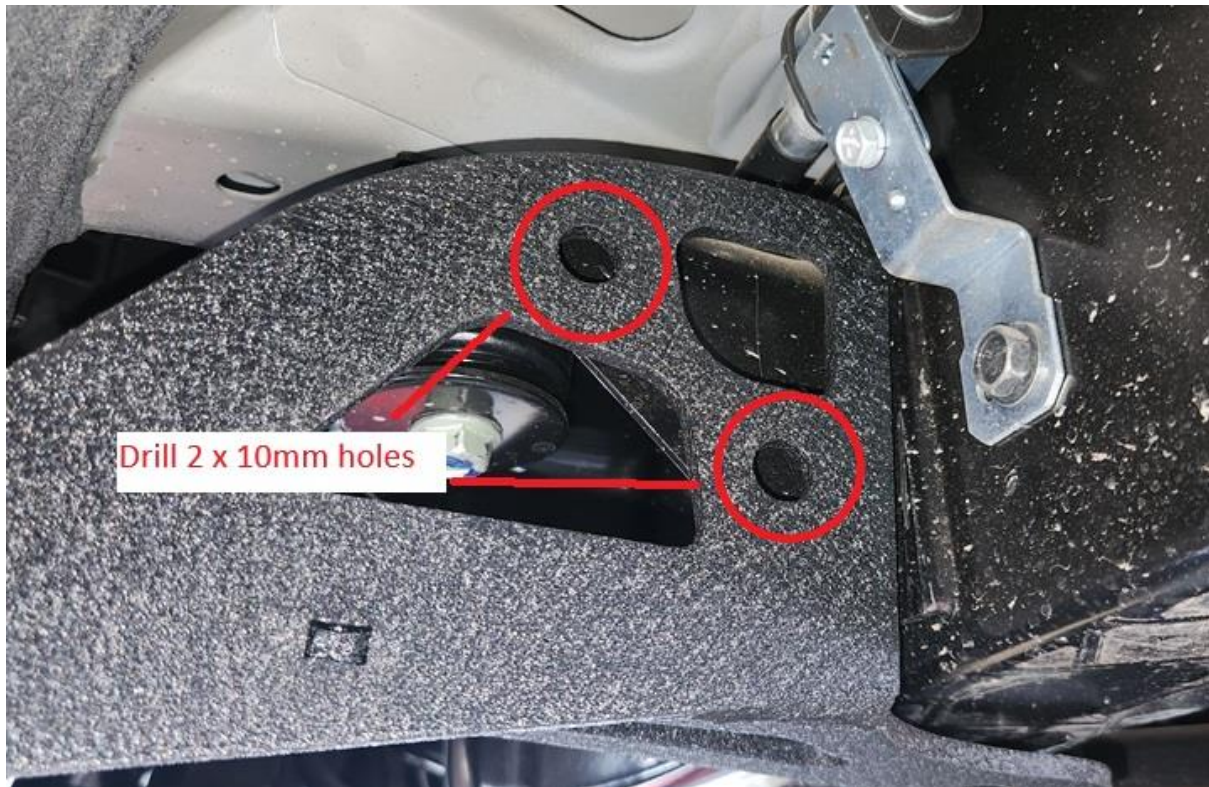


# DASH ROCK SLIDERS

## INSTALLATION INSTRUCTIONS



10. Fit mould nut to front mounting bracket the same as the driver side. Fit M12 dome head bolt with flat and spring washer and tighten. Drill 2 x 10mm holes in front mount. Paint inside holes and fit 2 M10x40mm bolts, nuts and washers.



11. Refit the HBMC unit and confirm enough clearance to the stud and nut. Place the HBMC cover in place and mark out the section to be cut out. Refit the cover and check all bolts are tightened. Refit the heat shield as required.

